

Leverett House is named for John Leverett, President of Harvard College from 1707 to 1724. In 1685, soon after his graduation from Harvard, he became a resident tutor and for more than ten years was one of the most active powers in the college, associating himself with the growing protest against the narrow orthodoxy desired for Harvard by some of the clergy. When he was chosen President, he had been Speaker of the House in Massachusetts and was Judge of the Superior Court, Judge of Probate, and a member of the Governor's Council. His administration at Harvard is associated with the breaking down of the old rigid sectarian control of the college and with a great increase in the number of students. "He was distinguished for vigorous and active endeavors to increase the funds, enlarge the accommodations, and establish the neglected or dormant claims of the college." He won the popularity of the students even in days when his class had to get up at five o'clock in order that he, as their tutor, might meet them before going to Boston to attend the sessions of the General Court. At his inauguration he was "Declared . . . to be the Reverend President of the . . . College . . . agreeable to the Choice of the Fellows of the House" and was directed "To Govern that house & the Schollars there with Duty & Allegiance to Our Sovereign Lady the Queen." These instructions he followed so well as to make his administration one of the most notable in the early annals of Harvard.

Leverett House comprises two buildings so designed and related as to form a coherent residential unit. One, McKinlock Hall, formerly a freshman dormitory, erected as a memorial to George Alexander McKinlock, Jr., of the Class of 1916, has been somewhat remodeled and largely added to. It faces the river between DeWolfe and Plympton Streets, extending back to Mill Street. The other, Mather Hall, named in honor of Increase Mather, first native-born President of Harvard, is a new building and occupies the corner of Mill and Plympton Streets, extending along Mill Street with an entrance opposite the main entrance of McKinlock Hall, and along Plympton Street opposite one façade of Lowell House.

A new wing added to McKinlock Hall on the east contains a large dining hall big enough to seat all the members of the House at one time. At one end there are long windows facing the river and at the other a large fireplace. Connected with the dining hall are a kitchen and serving room and the small common room over which the Master's house is built. The former dining hall of McKinlock Hall forms the library of Leverett House. This room was originally designed and built as a library and is admirably suited for the purpose. The former

serving room of McKinlock Hall is used as space for book stacks. The common room of McKinlock Hall, with new panelling, is the large common room of Leverett House.

Mather Hall is built on three sides of a rectangular court, the fourth side of which is made by a row of six squash courts built above the ground one story high. These courts will be for the use of members of the House and their guests.

Leverett House accommodates 237 students, a senior tutor and 15 other tutors, five or six of whom will be residents. There are four guest rooms in McKinlock Hall to be used for guests of the University or guests of members of the House. A suite for a visiting professor is on the second floor of Mather Hall. There are 52 single suites, all but two in Mather Hall; 46 double suites of which 21 are in Mather Hall and 25 in McKinlock; 20 suites for three men, 17 in McKinlock Hall and 3 in Mather Hall; 4 suites for four men, one for five, and two for six, all in McKinlock Hall. The variety in the size of suites makes possible a wide range of prices. Each suite contains a study, a bedroom for each student (except for a few suites in McKinlock where bedrooms for two men are provided), and a bath. Each is equipped with about the same furniture as is now supplied in the college dormitories, but students who wish to use their own furniture may do so. All the studies except one or two have fireplaces. Rugs may be rented from the University at reasonable rates.

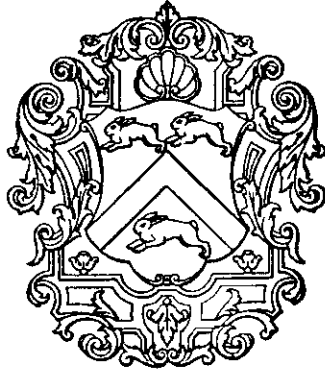
The small common room opening off the dining hall is primarily for the use of the Tutors and Associates of the House; the large common room will be primarily for students. The library will contain a large collection of books in various fields including most of those used in tutorial work or for outside reading in large courses as well as standard works of reference and books for general reading. All the public rooms in the House will be thoroughly and completely furnished and every effort has been made to make them attractive as well as essentially useful. Smoking will be allowed in the library as well as in the other rooms of the House.

As in the other Houses all student members of the House will be charged a minimum rate of \$7.50 a week for meals. This will entitle them to any ten meals they choose. For the student who takes fourteen meals in the House the charge will be \$8.50 per week. Additional meals will be paid for at the rate of 40 cents for breakfast, 60 cents for lunch, and 80 cents for dinner. The maximum charge for board per week will be \$10.50, which entitles a student to the full number of twenty-one meals. Provision will be made for à la carte service in addition, if there appears to be sufficient demand.

1940—41

LEVERETT HOUSE

HARVARD UNIVERSITY



FOR THE convenience of members of Leverett House, this leaflet contains an outline of the organization of the House and information as to some of the arrangements made for students in it.

The HOUSE OFFICE, on the ground floor below the Master's Lodgings, may be reached by way of the Master's front door on DeWolfe Street. Mrs. Remick, the House Secretary, will hold office hours there *from 10 to 12:15 and from 2:30 to 4 on week-days*; to her may be referred all matters of House business not otherwise provided for in this leaflet. The Office is closed Saturday afternoons, Sundays, and holidays.

The HOUSE BULLETIN BOARD is located in D entry, near the entrance to the Dining Hall. Special notices concerning all House activities will be posted there, as well as official notices concerning University or House rules. *Members of the House will be expected to consult the Bulletin Board frequently.*

IDENTIFICATION CARDS. In order to be admitted to the Library and the Squash Courts, each member of the House must have an identification card. This card will be supplied to students as they register in the membership book which will be in the Library until October 8. *All members of the House will save themselves inconvenience by registering promptly.*

PARIETAL RULES. The Parietal Rules of the University and the Rules Governing Tenants in University Dormitories, posted on the House

Bulletin Board, apply to Leverett House as to all other buildings of the University.

ENTERTAINMENT OF WOMEN GUESTS. A copy of the rules concerning *permission to entertain women guests* is sent to each member of the House at the beginning of the year, and is also posted on the House Bulletin Board. Members of the House who plan to entertain women guests should familiarize themselves in advance with these instructions, and will be held strictly responsible for following them exactly. Any questions not covered in the posted rules should be referred to the House Secretary or, in her absence, to Mr. L. F. McHugh, F-22, or Mr. S. D. Tuttle, E-23.

DINING HALL. Hours. Week-days: Breakfast, 7:45-9:30; Lunch, 12:15-1:30; Dinner, 5:30-7:00. Sundays and holidays: Breakfast, 8:00-9:45; Dinner, 12:30-1:45; Supper, 5:30-7:00.

Prices. Weekly contracts are as follows: 21 meals, \$10.00; 14 meals, \$8.50; 10 meals, \$7.50. Individual meals taken beyond the number of meals contracted for are: Breakfast, 40¢; Lunch, 60¢; Dinner, 90¢. The charge for guests is at the same rate.

Contracts. All members of the House must sign a meal contract at the Bursar's Office for one of the weekly rates. Any changes of contract must likewise be negotiated at Lehman Hall in advance of the week for which the change is desired. Rules regarding releases, temporary or permanent, from Dining Hall contracts are posted on the House Bulletin Board.

Inter-House Slips may be signed in the Leverett House Dining Hall except at the time of House Dinners and on certain other occasions of which notice will be given on the House Bulletin Board. *The attention of House members is called to the statement on the Bulletin Board concerning the conditions of the inter-House eating privilege.*

Women Guests may be entertained in the Dining Hall regularly at lunch and dinner on Saturdays, at noon dinner on Sundays and holidays, and on Tuesday evenings when there is no House Dinner. *Women will not be admitted to the Dining Hall on Saturday and Tuesday evenings after 6:30.* Members who plan to entertain women guests at any of these times are urged to reserve a table by applying in advance to the Hostess in the Dining Hall.

The JUNIOR COMMON ROOM in McKinlock Hall is for the use of all members of the House. Magazines and other equipment for it are purchased by the House Committee, to whom all suggestions for increasing the usefulness of the room should be made.

LIBRARY. The rules for the use of the Library are posted separately on the House Bulletin Board and in the Library.

The MUSIC ROOM, A-10, contains the House phonograph, on which members of the House may play records drawn from the collection in the Library. Miniature scores may also be taken out of the Library for use in connection with these records. Rules for the use of the records,

scores, and phonograph are posted in the Music Room and in the Library.

Any member of the House who has secured permission to entertain women guests in his own suite, in accordance with the rules posted on the Bulletin Board, may also entertain his guests in the Music Room.

The SENIOR COMMON ROOM is reserved for the use of the Associates and Tutors of the House and such others as may be elected special members of the Common Room. Other members of the House may be admitted by special invitation of an Associate or Tutor.

SQUASH COURTS. There are six Squash Courts for the use of House members, of guests with whom members are playing, and of participants in official tournaments. Season tickets allowing members of the House to play one half hour a day throughout the College year may be purchased for \$3.50 at the Bursar's Office and charged on the term bill. Members of the House who hold \$10.00 H.A.A. participation tickets are entitled to use the Squash Courts one half hour a day without further charge. Individual games cost 15¢ per half hour per person. Other rules for the use of the courts will be posted in the entrance ways to the courts.

The PING-PONG ROOM is in H entry basement. Members of the House wishing to use it may secure the key at the Janitor's Office. Paddles may be borrowed from the Janitor's Office, but players must provide their own ping-pong balls.

HOUSE ATHLETICS will be under the direction of James W. L. Monkman '41, A-42, assisted by Jesse F. Cleveland '42, K-22, and William E. C. Eustis '42, J-35, and they will welcome inquiries from any members of the House. Notices concerning the arrangements for House Athletics will be posted on the House Bulletin Board.

The HOUSE COMMITTEE consists of the following members: David D. Henry '41 (*Chairman*), K-41, G. Lyman Snow '42 (*Treasurer*), I-14, Henry Doerr '41, A-24, George P. Mayhew '41, H-51, William W. Tyng '41, E-41, William W. Fisher ('42) '43, G-23, Eugene D. Keith '42, G-31, and two members of the Class of 1943 to be elected in October.

Members of the House are urged to consult the members of this Committee about any matter of general policy which affects undergraduate life in the House.

A HOUSE FUND, contributed by undergraduates, is used under the direction of the House Committee, to support undergraduate House activities, such as athletics, dramatics, dances, the House Glee Club and Orchestra, the Junior Common Room and the ping-pong room. The Committee also, when possible, uses the Fund to provide better permanent facilities in the House for the various undergraduate activities. In 1940-41 each member of the House will be assessed 1% of his room rent as a contribution to the House Fund. *All members of the House are asked to pay their assessment to the House Fund before November 15th in order that undergraduate activities and privileges may be maintained*

and extended. Members of the House who are unable to pay by November 15th should consult the Chairman of the House Committee, or the Master.

LEVERETT HOUSE GLEE CLUB AND ORCHESTRA. All members of Leverett House interested in vocal or instrumental music are urged to join in the activities of the Leverett House Glee Club and Orchestra. This group plans a series of choral and orchestral concerts, and offers a chance for men who are interested in music to develop their interests in informal association with other undergraduates of similar tastes. Members of the House who wish to share in the activities of the Glee Club and Orchestra should consult, as early as possible in the college year, Charles P. Berger '41, K-41.

DRAMATICS. All men interested in acting, play production, stage lighting, or scene designing, or in reading plays or hearing them read, are urged to leave their names at the House Office as soon as possible in order that arrangements may be made to organize the dramatic activities of the House.

HOUSE DINNERS AND ENTERTAINMENTS. Ordinarily a House Dinner will be held each month from October through May. The dates of these dinners will be announced in advance. On the evenings of House Dinners, *the doors of the Dining Hall do not open until 6:15, and the privilege of signing inter-House slips or guest checks is suspended.*

Informal dinners and meetings will be held from time to time to entertain a speaker or for purposes of discussion. Suggestions as to persons who might be guests of the House at House Dinners or at informal meetings will be particularly welcome.

TIMOTHY DWIGHT COLLEGE. Leverett House has an informal association with Timothy Dwight College at Yale University, and it is hoped that during the year some athletic contests between the House and the College may be arranged. On occasion it may be possible for men in Leverett House visiting New Haven to avail themselves of the hospitality of Timothy Dwight College. Any men interested in this may get further information from the House Secretary.

OFFICE HOURS for the MASTER, ACTING SENIOR TUTOR, ASSISTANT SENIOR TUTOR, and other members of the House staff, will be posted on the House Bulletin Board.

* * *

Any member of the House will be welcome at tea in the Master's Lodgings on Thursday afternoons, beginning October 10, between the hours of four-thirty and six. The Assistant Senior Tutor will welcome any member of the House at tea in E-23 McKinlock on Wednesday afternoons beginning October 9 from four-thirty to six.



LEVERETT HOUSE
HARVARD UNIVERSITY
CAMBRIDGE, MASSACHUSETTS

SUMMER OF 1942

For the convenience of men in Leverett House this summer, this leaflet contains an outline of the organization of the House and information as to some of the arrangements made for students living in it.

THE HOUSE OFFICE is located on the ground floor of the Master's Lodgings at 25 DeWolfe Street. Miss Metcalf, the House Secretary, holds office hours there from 9:30 to 11:30 and from 2:30 to 4 on weekdays; to her may be referred all matters of House business not otherwise provided for in this leaflet. The Office is closed on Saturdays, Sundays, and holidays.

THE BULLETIN BOARD is in D entry, near the entrance to the Dining Hall. Special notices concerning all House activities will be posted there, as well as official notices concerning University and House rules. Men living in the House will be expected to consult the Bulletin Board frequently, and will be held responsible for familiarity with notices posted there.

PARIETAL RULES. The Parietal Rules of the University and the Rules Governing Tenants in University Dormitories, which are posted on the House Bulletin Board, apply to Leverett House as to all other buildings of the University.

ENTERTAINMENT OF WOMEN GUESTS. A copy of the rules governing the entertainment of women guests is posted on the House Bulletin Board. Men who plan to entertain women guests should familiarize themselves in advance with these instructions, and will be held strictly responsible for following them exactly. Any questions not covered in the posted rules should be referred to Mr. Wechsler, A-13, in the first summer term, and to Mr. Freeman, E-23, in the second summer term; or to Mr. Dahl, G-21, both terms.

House residents who have men from outside the House or the University staying in their suites as overnight guests will be charged at the rate of one dollar per night or five dollars per week, if the guest stays more than two nights.

DINING HALL. Hours. Weekdays: Breakfast (to be announced); Lunch, 12:15-1:30; Dinner, 5:30-7:00. Sundays and holidays: Breakfast, 8:00-9:45; Dinner, 12:30-1:45; Supper, 5:30-7:00.

All residents of the House must sign a meal contract at the Bursar's Office.

Inter-House slips may be signed in the Leverett House Dining Hall except on certain occasions of which notice will be given on the Bulletin Board. House members are permitted to take 3 meals a week in Houses other than their own. If a man takes more than the permitted number of inter-House meals, there will be an extra charge at the regular guest rate.

The charges for guest meals are: Breakfast 40c., Lunch 60c., and Dinner 90c.

Women guests may be entertained in the Dining Hall regularly at lunch and dinner on Saturdays, at noon dinner on Sundays and holidays, and on Tuesday and Friday evenings when there is no special House Dinner. Women will not be admitted to the Dining Hall after 6:30. Members who plan to entertain women guests are urged to reserve a table by applying in advance to the Hostess in the Dining Hall.

THE JUNIOR COMMON ROOM in McKinlock Hall is for the use of all residents in the House. Magazines and other equipment for it are purchased by the House Committee, to whom all suggestions for increasing the usefulness of the room should be made.

LIBRARY. The rules for the use of the Library are posted on the House Bulletin Board and in the Library.

THE MUSIC ROOM, A-10, contains the House phonograph, on which residents of the House may play records drawn from the collection in the Library. Miniature scores may also be taken out of the Library for use in connection with these records. Rules for the use of the records, scores, and phonograph are posted in the Music Room and in the Library.

Any member of the House who is entertaining women guests in his own suite, in accordance with the rules posted on the Bulletin Board, may also entertain his guests in the Music Room.

PIANO PRACTICE ROOM. There is also a Piano Practice Room in K entry basement, where members of the House may use the piano or practice on their own musical instruments. Reservations may be made on an hourly basis between 11 a.m. and 7 p.m. by applying at the House Library. Students who are just learning to play, or who wish to practice on loud brass instruments, must use this room for practice in order not to inconvenience other residents in the House.

Musical instruments may be played only between the hours of 1 and 10 p.m. Radios and phonographs should be toned down, especially when windows are open during the warm months. For complete information on all matters of conduct, students should consult the Parietal Rules on the Bulletin Board.

THE SENIOR COMMON ROOM is reserved for the use of the Associates and Tutors of the House and such others as may be elected special members of the Common Room. Other residents of the House may be admitted by special invitation of an Associate or Tutor.

SQUASH COURTS. The six Squash Courts are temporarily closed. Further notices concerning their use will be posted on the Bulletin Board.

THE PING-PONG ROOM is in H entry basement. Residents of the House wishing to use it may secure the key at the Janitor's Office, but players must provide their own ping-pong balls.

HOUSE ATHLETICS will be under the direction of Norman W. Cameron '43, D-51. Notices concerning the arrangements for House Athletics will be posted on the Bulletin Board.

Representatives of the HOUSE COMMITTEE in residence for the summer term will be: J. F. Harvey '43, B-51, T. T. Hoffman '44, I-51, R. A. Koch '44, B-34. Residents in the House are urged to consult the members of this Committee about any matter of general policy which affects undergraduate life in the House.

Notices concerning the House Fund, athletics, dramatics, dances, the House Glee Club and Orchestra, and the Junior Common Room will be posted on the House Bulletin Board.

1953-1954

LEVERETT HOUSE

HARVARD UNIVERSITY



FOR the convenience of members of Leverett House, this leaflet contains an outline of the organization of the House and information pertinent to living arrangements for its members.

The HOUSE OFFICE is located in Mather Hall, Suite F-11, and is open from 9:00 to 12:00 and from 2:00 to 4:30 Monday through Friday. All matters of House business not otherwise provided for in this leaflet may be referred to Miss Reynolds, the House Secretary or Miss Buffinton, the Assistant (KI 7-7600, Ext. 2292).

The HOUSE BULLETIN BOARDS are in D entry, near the entrance to the Dining Hall. All official University and House notices and rules are posted there. *Members of the House are expected to consult this Board frequently and are held responsible for all information posted there.* Other sections of the board bear notices of House and University activities, the reports of your House Committee and the pictures of all House members.

The PARIETAL RULES of the University and the Rules Governing Tenants in University Dormitories, which are posted on the House Bulletin Board, apply to Leverett House as to all other buildings of the University.

IDENTIFICATION CARDS which admit to the Library, the Squash Courts, the Tennis Court and which are countersigned on payment of House dues, are issued House members on registration in the Library in October. *Please register promptly.*

ENTERTAINMENT OF WOMEN GUESTS.

(a) Students may entertain ladies in their suites between the hours of 4:00 and 7:00 P.M. Monday through Thursday; between the hours of 4:00 and 8:00 P.M. on Friday; and between the hours of 1:00 and 8:00 P.M. on Saturday, Sunday and University Holidays. Save on the days of special University functions, the hours on Saturdays and the days before University Holidays are extended until 11:00 P.M. On the nights of House dances or other events to which ladies are admitted, room permission extends only to the time at which the entertainment or dance is scheduled to begin. Residents must cooperate in the enforcement of these rules in their suites; the host is responsible for the behavior of all guests in his suite.

(b) Ladies shall not enter the House unattended; the *host* must see that they are properly escorted. It is the duty of the host to see that each lady visiting his suite fills out a guest card at the superintendent's office. The time of departure should be reported there and will be filled in by the attendant.

(c) Any student wishing to hold a party for more than twelve guests at which ladies are to be present should obtain a party form from the House Office. This must be completed and then approved by the Burr Senior Tutor or the Assistant Senior Tutor.

Members of the House are responsible for these rules; any questions may be referred to the Senior Tutor or Assistant Senior Tutor.

DINING HALL.

(a) During the week the Dining Hall hours are: Breakfast, 7:30-9:00; Lunch, 12:15-1:45; Dinner, 5:30-7:00. The hours on Sundays and holidays are: Breakfast, 8:15-9:30; Dinner, 12:30-1:45; Supper, 5:30-7:00.

(b) At the opening of the fall term, a meal contract at a weekly rate of \$14.00 must be signed. The charges for guest meals are: Breakfast, \$.65; Lunch, \$.80; Dinner, \$1.10 (tax included).

(c) Inter-House Guests may sign in the Leverett House Dining Hall *except* at the time of House Dinners and on certain other occasions of which notice will be given on the House Bulletin Board.

(d) Women guests may be entertained in the Dining Hall at dinner on Friday evenings, lunch and dinner on Saturdays, and dinner and supper on Sundays and holidays. Payment for all guest meals is by coupon; these may be purchased in the Dining Hall.

(e) Coats and ties must be worn at all times in the Dining Hall.

ELECTRICAL APPLIANCES of over 100 watts (radios and phonographs excepted) must be registered with the House Superintendent for inspection. If the wiring of the suite is adequate and the appliance is in satisfactory condition, a sticker of approval will be issued. Appliance charges for the academic year 1953-54 are as follows:

Refrigerator	\$4.50	Percolator	\$1.50
Flat Iron	1.50	Electric Blanket	2.50
Toaster	1.50	Space Heater	2.50
Hot Plate	2.50		

The HOUSE COMMITTEE is composed of members elected for a one-year term, either in the Spring or Fall. Its members welcome suggestions from the membership of the House and are glad to advise students interested in participation in House activities.

All general House activities are under the direction of committees appointed by and responsible to the House Committee. To support these activities the House Committee levies dues, the amount of which is determined each year by vote of the Committee. Some of these funds are used by the Committee to maintain and improve the permanent facilities under its direction. *House members are urged to pay their dues promptly in order that activities may be maintained and extended.*

The JUNIOR COMMON ROOM in McKinlock Hall is for the use of all House members. Magazines and other facilities there are purchased by the House Committee from the House Fund. Women may enter the Junior Common Room and be entertained there without signing in between the hours of 2:00 and 11:00 P.M. any day of the week.

The SENIOR COMMON ROOM is reserved for the use of the Associates and Tutors of the House and other duly elected special members of the Common Room.

LIBRARY RULES are posted separately on the House Bulletin Board and in the Library.

Rules for the use of the PIANO PRACTICE ROOM (F entry basement), sign-up schedule and key are in the hands of the Librarian.

The DAVID WIGHT PRALL MEMORIAL ROOM (A-10) contains the House phonograph. The rules for the use of records, scores and phonograph are posted in the Music Room and the Library. House members may entertain women guests in the Music Room in accordance with the Parietal Rules.

The PING-PONG ROOM is in H entry basement. The key to this room and ping-pong paddles are in the superintendent's office. Players must provide their own ping-pong balls.

The TELEVISION ROOM in G entry basement is kept locked, but will be opened on application to the superintendent's office.

The PHOTOGRAPHIC DARKROOM in F entry basement is in the charge of the House Photographic Club as the agent of the House Committee. Its use is limited to members of the Club; application for membership should be submitted to the secretary, whose name is posted on the Bulletin Board.

A coca-cola machine and washing machines for the use of House members are located in F entry basement.

The HOUSE ATHLETIC PROGRAM is the responsibility of an Athletic Secretary and two assistants. This program is a very complete and complex one and these officials urge all House members interested in participation in House teams to inform the secretary in charge of their

sports of that interest and to watch the Athletic Bulletin Board for notices of practices and of contests. The success of the program is in your hands.

The HOUSE TENNIS COURT is located at the corner of Mill and De Wolfe Streets. Members of the House sign up in advance for the use of the court. In an effort to keep the court available to as many members of the House as possible, House members are permitted to sign up for only one hour at a time.

The SQUASH COURTS in Mather Hall are for the use of House members, of guests with whom members are playing, and of participants in official tournaments. Rules for the use of the courts are posted in the entrance ways to the courts.

DRAMATIC PRODUCTIONS are a regular part of House activities. All men interested in acting or staging are asked to leave their names with the Chairman of the Drama Committee, whose name is posted on the Bulletin Board, or with Mr. Rockman in G-21.

CONCENTRATION DINNERS in the various fields are held frequently throughout the academic year. At these dinners students and staff members of a particular field meet with a guest speaker for dinner and a short talk.

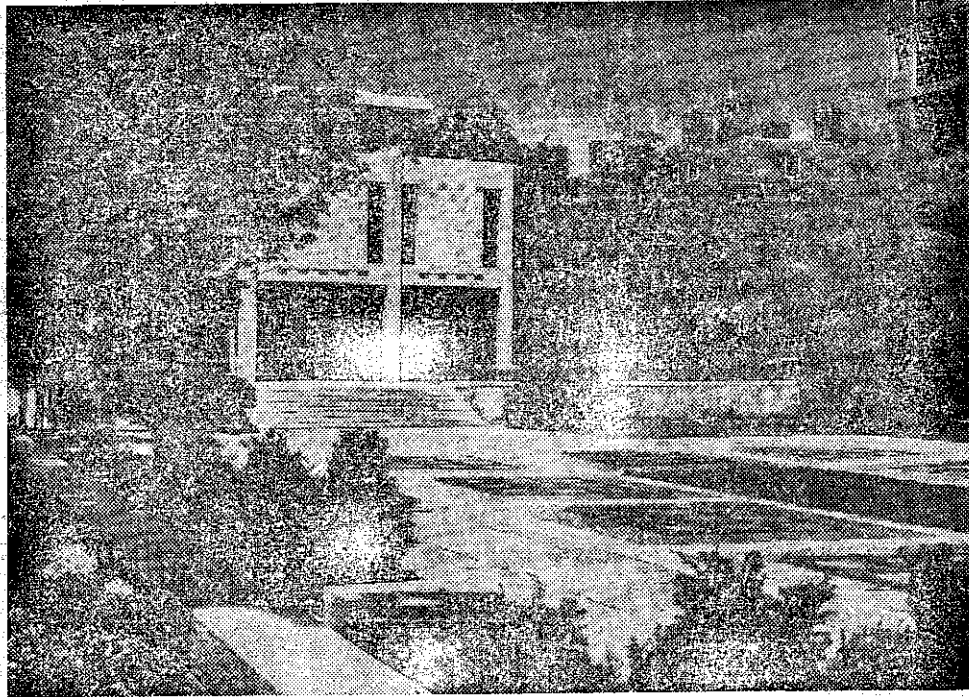
TIMOTHY DWIGHT COLLEGE of Yale and Leverett House have an informal association. Customarily, several athletic contests are arranged each year between House and College. Leverett House men visiting New Haven may occasionally be able to avail themselves of the hospitality of Timothy Dwight College; any men interested should see the House Secretary for further information.

In case of ILLNESS OR ACCIDENT and other emergency during term-time, a student should call the Hygiene Department through the University switchboard (KI 7-7600) and should also notify the Senior Tutor, the Assistant Senior Tutor, or the Master.

OFFICE HOURS for the Master, Senior Tutor and Assistant Senior Tutor are posted on the House Bulletin Board. The Master's Lodgings are at 25 De Wolfe Street (TR 6-6541), those of the Senior Tutor in E-23 (EL 4-5696); and those of the Assistant Senior Tutor in G-21 (UN 4-0181).

HARVARD COLLEGE LIBRARY CLIPPING SHEET

Landscaping Comes to Fore at Harvard's Leverett Towers



HARVARD'S LEVERETT TOWERS STRESSES LANDSCAPING

By HENRY A. MILLON

The New England Architecture section of the Boston Arts Festival, which closes today, contains five representative ex-



MILLON

amples of private residences, dormitory groupings and industrial buildings.

This year for the first time Festival judges recognized landscape architecture as a legitimate field in architecture, and the land-

scaping by Sasaki, Walker and Associates for the courtyard of Harvard's new Leverett Towers is an outstanding exhibit.

When Harvard and the architects Shepley Bulfinch Richardson and Abbott decided to build on the relatively restricted site two towers and a separate library instead of Harvard's more traditional enclosed courtyard house scheme, the landscape architects were faced with the problem of giving some sense of enclosure to a "courtyard" open on three sides.

Sunk four feet below the surrounding level, the court-

yard has two corners marked by willow trees that weave delightfully in the wind against the precious, elegant, face of the dormitory towers.

The south side of the court is defined by, in addition to a low wall, a group of twelve maples that form a mass which effectively encloses the open central space. The north corner is equally closed by a small grove of beech trees, while the service entrance to the west is, in the Spring, a delightful corner filled with flowering crab apple.

The active grey slate and white marble pattern of the courtyard surface is interrupted by numerous small grass

areas and a large rectangular grass center that seems to bear up well even under heavy alumni traffic and serves as a good foil to the planting, both in terms of texture and color.

There are, however, several regrettable inclusions that mar complete satisfaction with the landscape environment. One is the pair of kobus magnolia that so stolidly flank the main entrance of the library. Another is the profusion of plant materials employed—for instance the arbitrary incursion of the pine trees at the south and east corners that are not doing well and are not visually well integrated with the willows or the crab apples. But these are frivolous objections to an otherwise good solution.

The jury also selected a dormitory group recently added to the Rhode Island School of Design in Providence. The school has not until recently provided quarters for its students and the present building marks the halfway point for a program that will eventually house the majority of its men and women students.

The architects, Robinson, Green and Beretta, faced with a difficult site on the side of steeply sloping College Hill, produced a solution that made an asset of an apparent limitation. The dormitory buildings step down and across the hill enclosing a central court and series of terraces connected by short flights of stairs. The main common building, forming a third side to the central court also consists of several levels and contains a dining room on the lower level which has a superb prospect of downtown Providence.

The architects strove to have their buildings fit in with the largely 18th and 19th century residential environment by keeping the building unit size small and by choosing brick, slate, and white woodwork to harmonize with the older buildings. A commendable effort that is almost successful.

The architecture exhibit at the Boston Arts Festival will do no more than whet your appetite. The buildings shown are all in New England (one in Cambridge, one in Provi-

dence, three in Connecticut) and all but the industrial parks merit a visit. Why not make an architectural pilgrimage one of your weekends this Summer?